



Art of The Lotus Maiden

The Mythic Naturalism of

JONATHON EARL BOWSER



Art of The Lotus Maiden

The Mythic Naturalism of
JONATHON EARL BOWSER

Charcoal study for **Leaving the Whale**



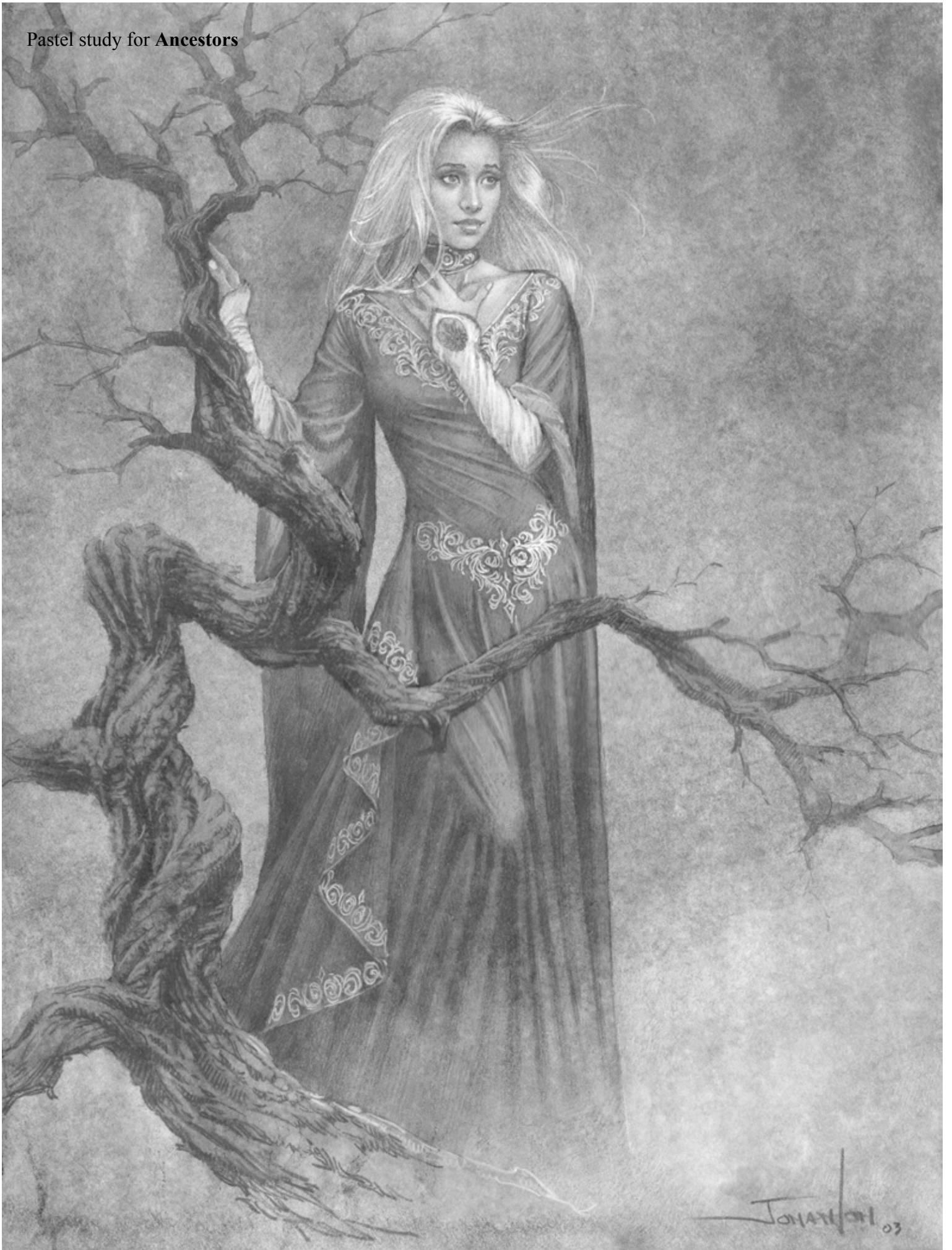
Cathedral of Illusion
Oil on Linen - 48" x 30"







Pastel study for **Ancestors**





Ancestors
Oil on Canvasboard - 24" x 16"

Pencil study for **The Awakening**



The Awakening
Oil on Linen - 48" x 30"

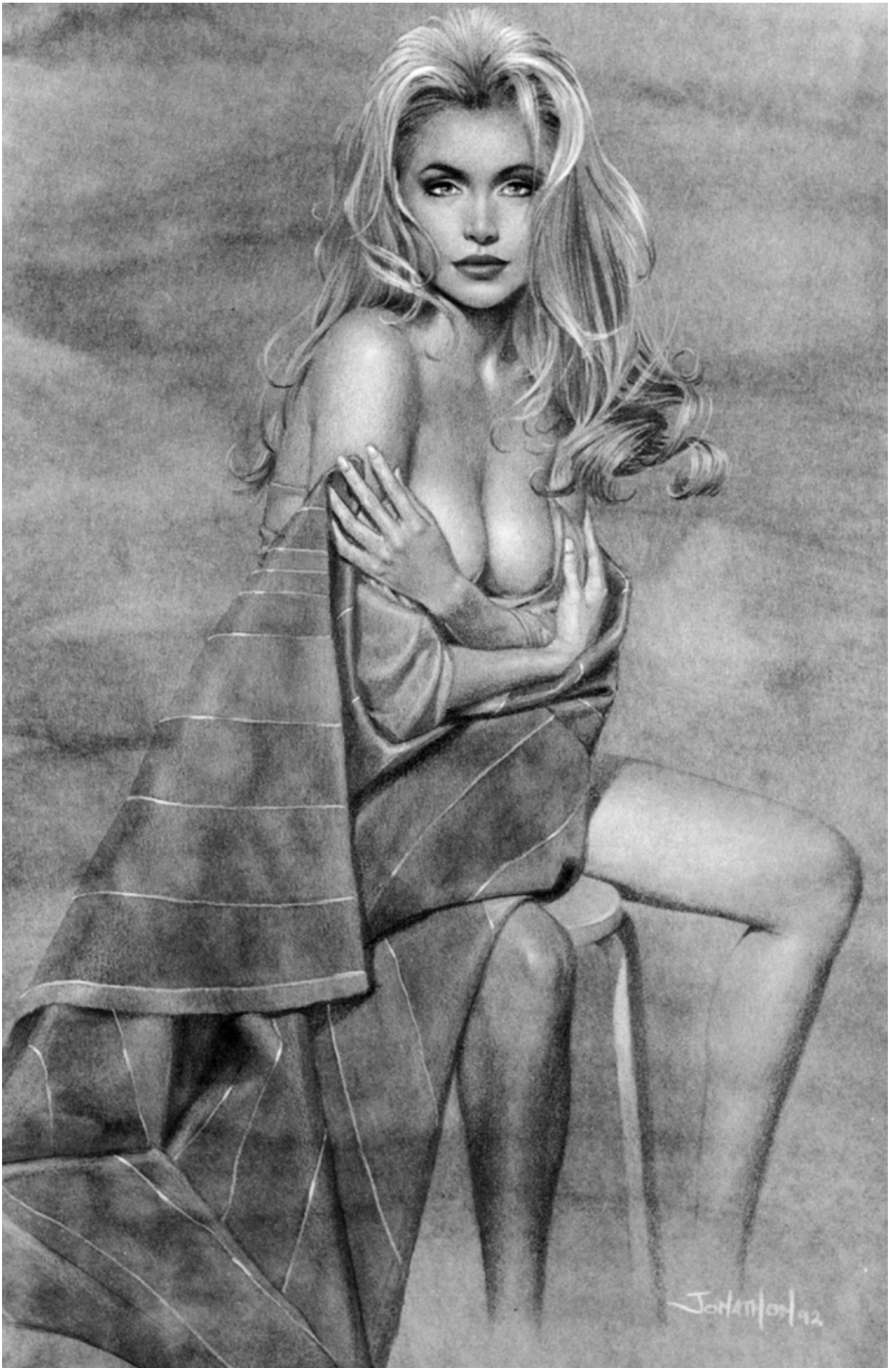


Pencil study for **A Beckoning Light**



A Beckoning Light
Oil on Canvas - 30" x 17"







Discretion

Watercolor and Pastel on Arches - 17" x 11"

Pencil study for **The Blue and the Red**



The Blue and the Red
Oil on Canvasboard - 24" x 16"



Pencil study for **Cascade**



Cascade
Oil on Canvas - 42" x 18"



Pencil study for **Invariance and Enlightenment**



Invariance and Enlightenment
Oil on Canvas - 72" x 48"



Pencil study for **Forest Mist**



Forest Mist
Oil on Canvasboard - 24" x 16"

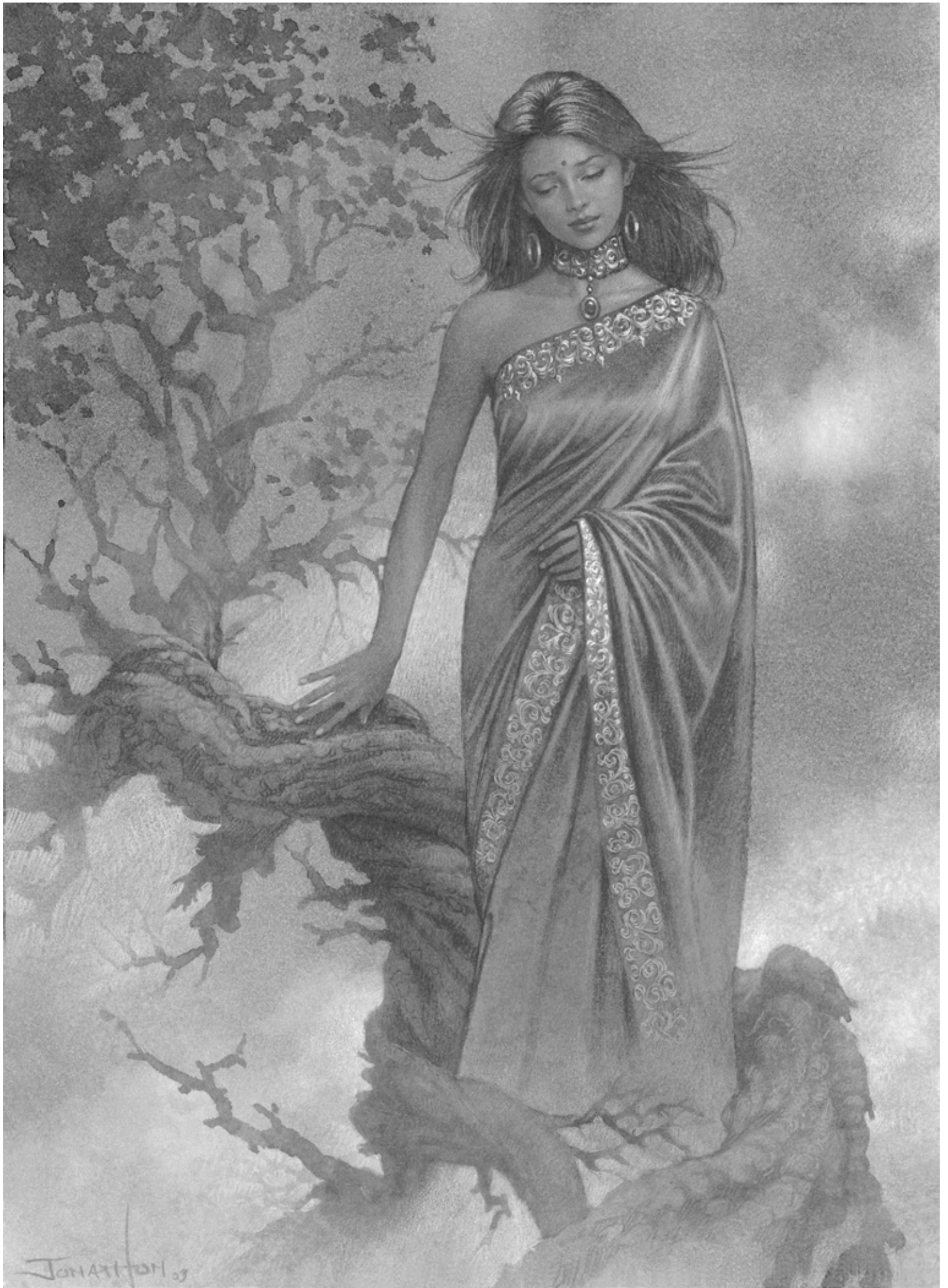


Pencil study for **Forest Light**



Forest Light
Oil on Linen - 42" x 28"





JONATHAN 09



Raven's Mist Woman

Watercolor and Pastel on Arches - 17" x 11"

Charcoal study for **Cloak of the Maternal Sky**



Cloak of the Maternal Sky
Oil on Canvasboard - 24" x 16"



Pencil study for **Celestial Apparition**



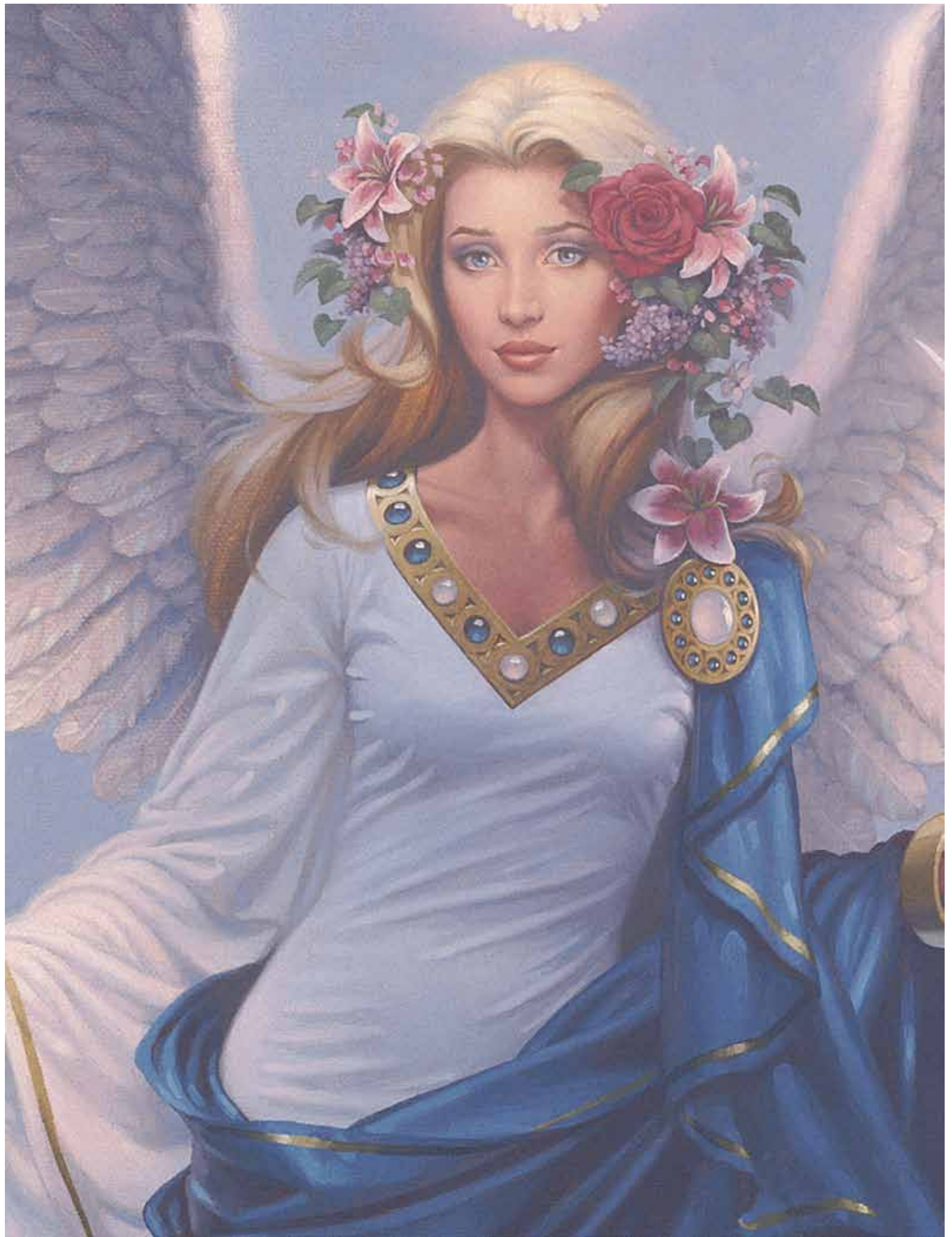
Celestial Apparition
Oil on Canvas - 36" x 24"



Charcoal study for **Phoenix Ascendant**



Celestial Apparition - Detail, actual size



Pencil study for **Order and Chaos**





Order & Chaos
Oil on Canvas - 42" x 42"

Charcoal study for **Gates of Valhalla**



Gates of Valhalla
Oil on Linen - 48" x 24"



Charcoal study for **Luminous Wind**



Luminous Wind
Oil on Canvasboard - 24" x 16"



© 2013





Valkyrie
Watercolor and Pastel on Arches - 17" x 11"

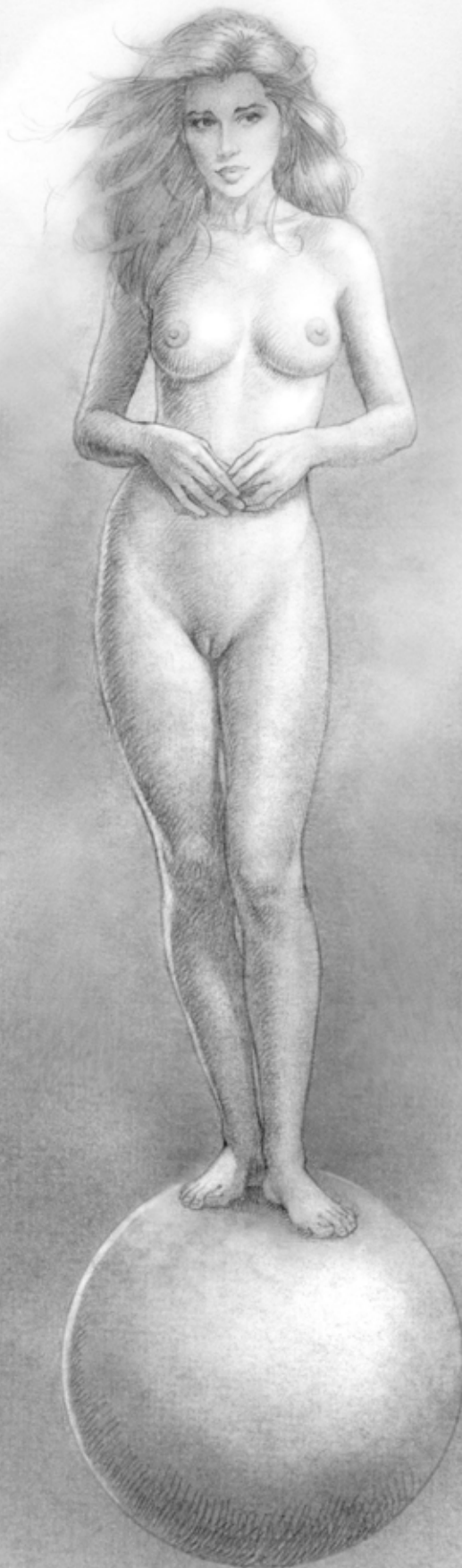
Pencil study for **RiverGenesis**



RiverGenesis
Oil on Linen - 44" x 25"



Charcoal study for **Sphere**



RiverGenesis - Detail, actual size



Pencil study for **Song of the Hummingbird Muses**



Song of the Hummingbird Muses
Oil on Linen - 48" x 30"



Pencil study for **Waiting for Parsival**



Waiting for Parsival
Oil on Canvas - 36" x 24"

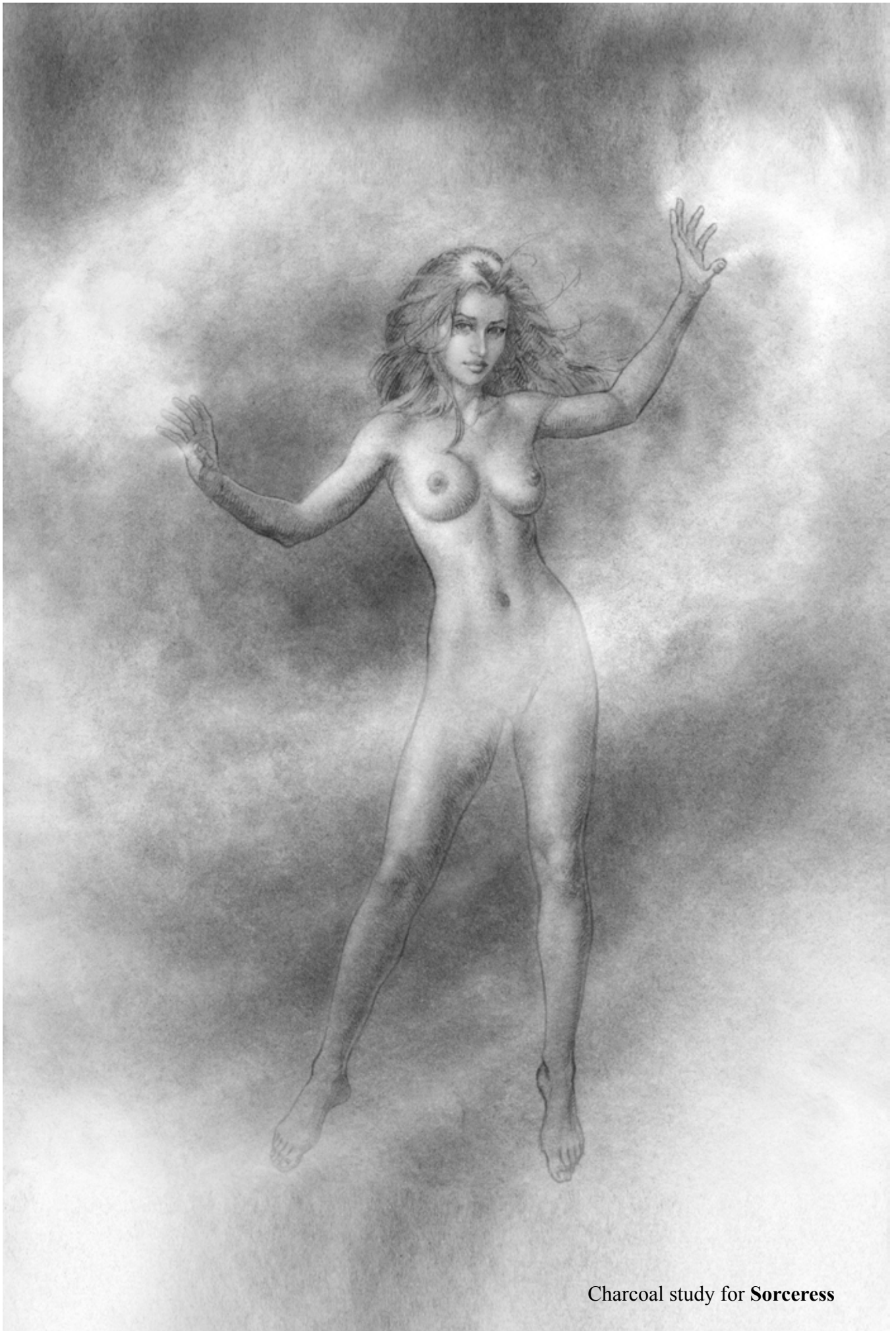


Pencil study for **Tears of Waialeale**



Tears of Waialeale
Oil on Canvas - 36" x 24"





Charcoal study for **Sorceress**



Sorceress
Oil on Canvasboard - 17" x 11"

SONATON ©18

Charcoal study for **Rhubarbarella**





Tiger
Watercolor and Pastel on Arches - 9" x 6"

Pencil study for **Eurynome and Ophion**



Eurynome and Ophion
Oil on Linen - 27" x 42"



Charcoal study for **Nebula**





Nebula
Oil on Canvasboard - 17" x 11"

Pencil study for Isis



Isis - Child of Earth and Sky
Oil on Linen - 48" x 30"



Pencil study for LotusWood



LotusWood
Oil on Linen - 39" x 26"



Pencil study for **Transcendeffervescence**



Transcendeffervescence
Oil on Canvasboard - 30" x 20"



Pencil study for **Lotus of the Eternal Night**



Lotus of the Eternal Night
Oil on Canvasboard - 30" x 20"



Charcoal study for **Mother of Stars**



Lotus of the Eternal Night - Detail, actual size



Charcoal study for **Red Stars Rising**



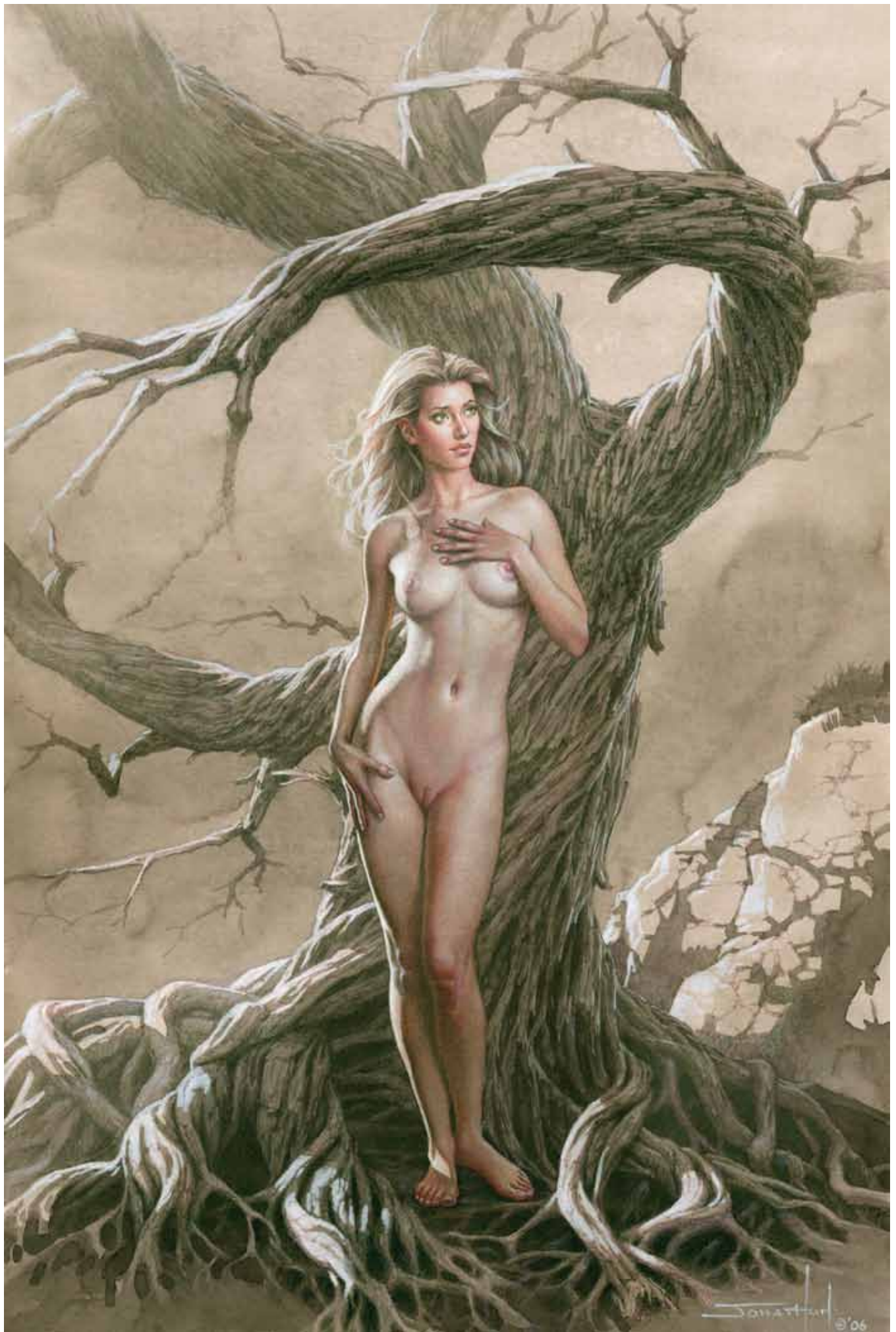
Seeds of Blue Stars
Oil on Canvas - 30" x 20"



Pencil studies for **The Chosen**



The Chosen
Pastel and Watercolor on Arches - 17" x 11"

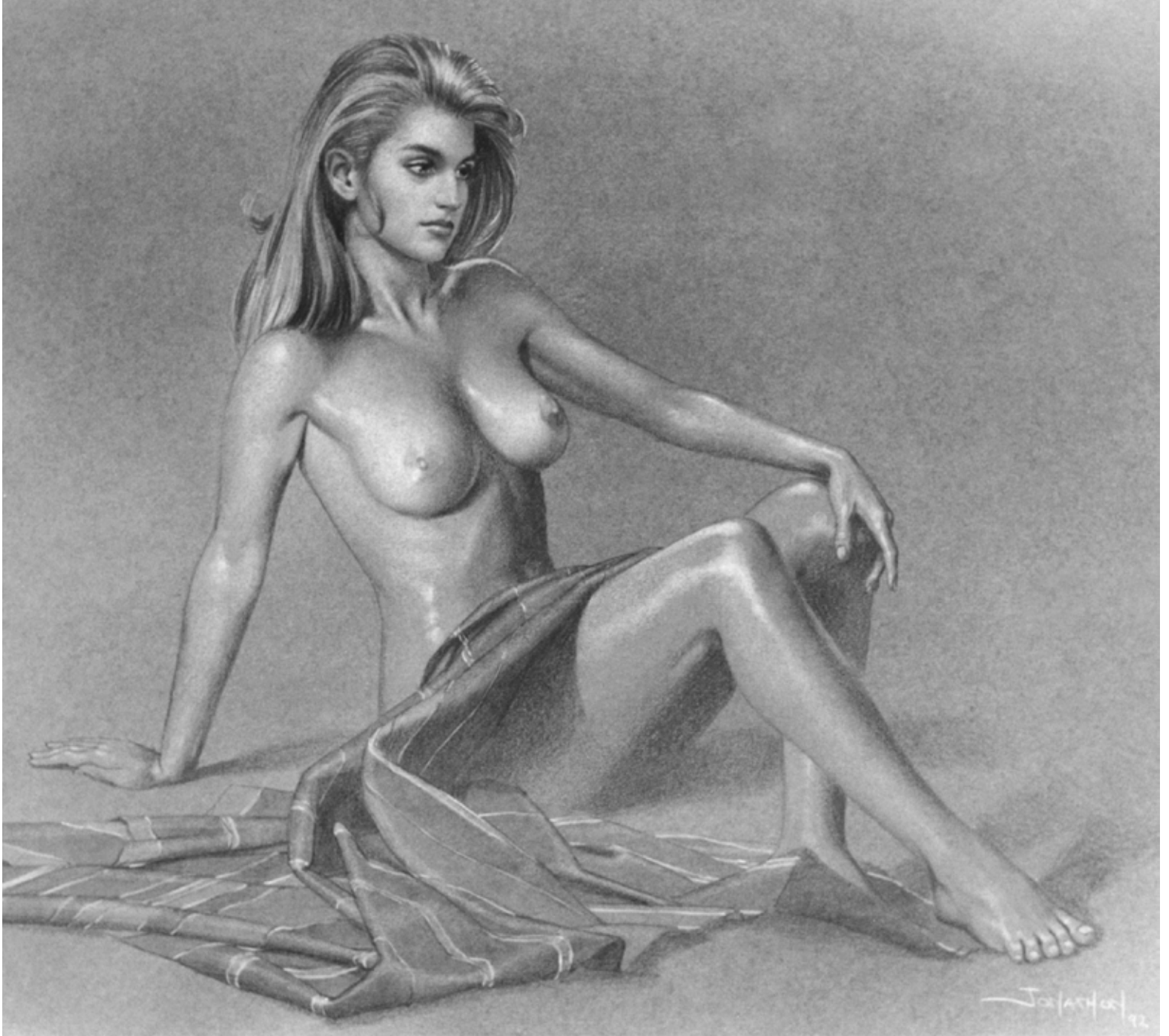


Pencil-Photoshop study for **Primeval Geometry**



Primeval Geometry
Oil on Canvasboard - 23" x 16"





Primeval Geometry - Detail, actual size



Pastel study for **Tending the DragonSleep**



Tending the DragonSleep
Oil on Canvasboard - 30" x 20"

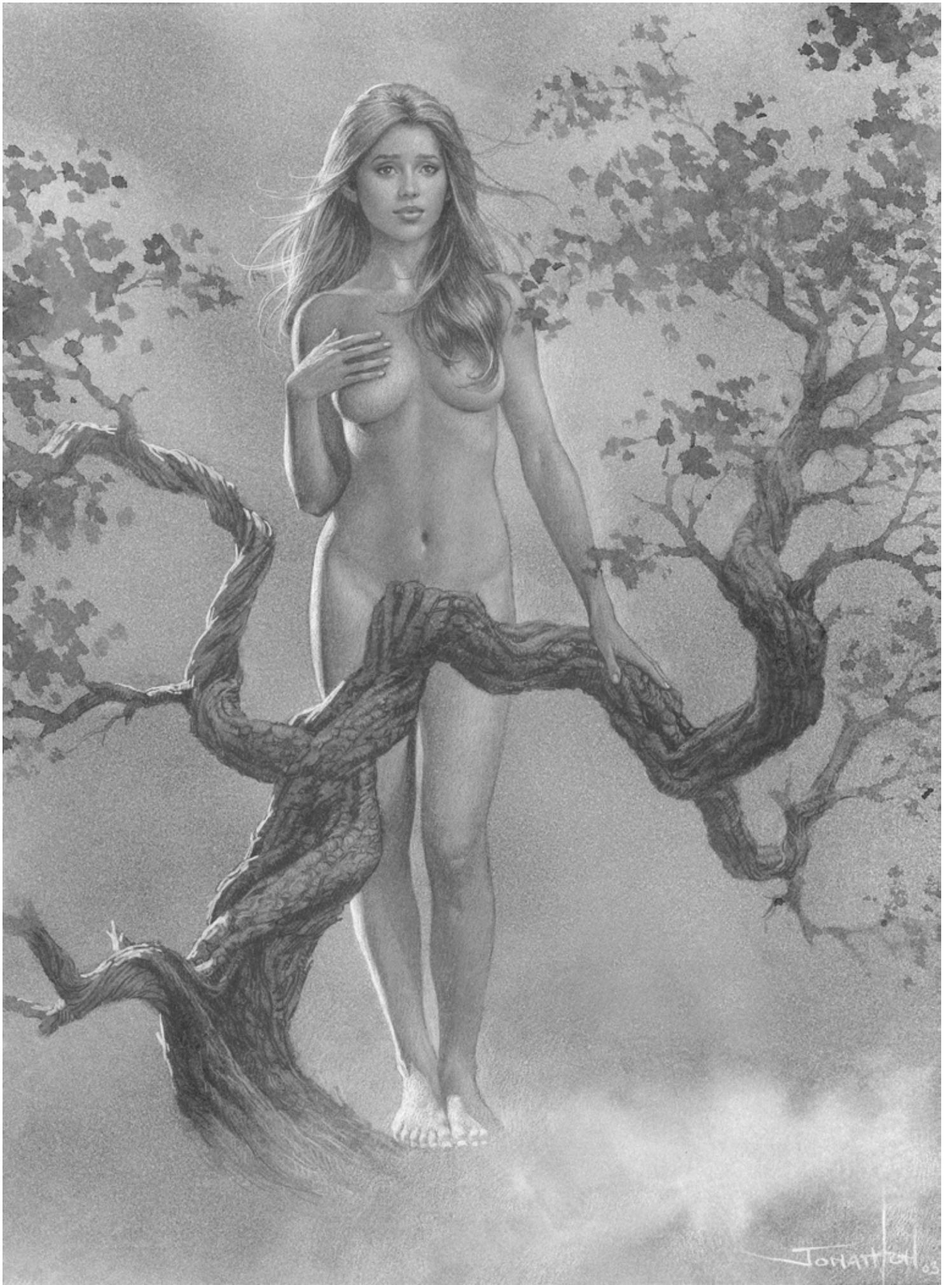


Charcoal study for **Primeval Moonlight**



Primeval Moonlight
Oil on Canvasboard - 23" x 17"







Still Falling from the Hidden Country
Oil on Canvasboard - 24" x 16"

Pencil study for **Angel of Capricorn**



Angel of Capricorn
Oil on Canvas - 28" x 48"



Pencil study for **Goddess of the Tides**



Goddess of the Tides
Oil on Linen - 30" x 48"

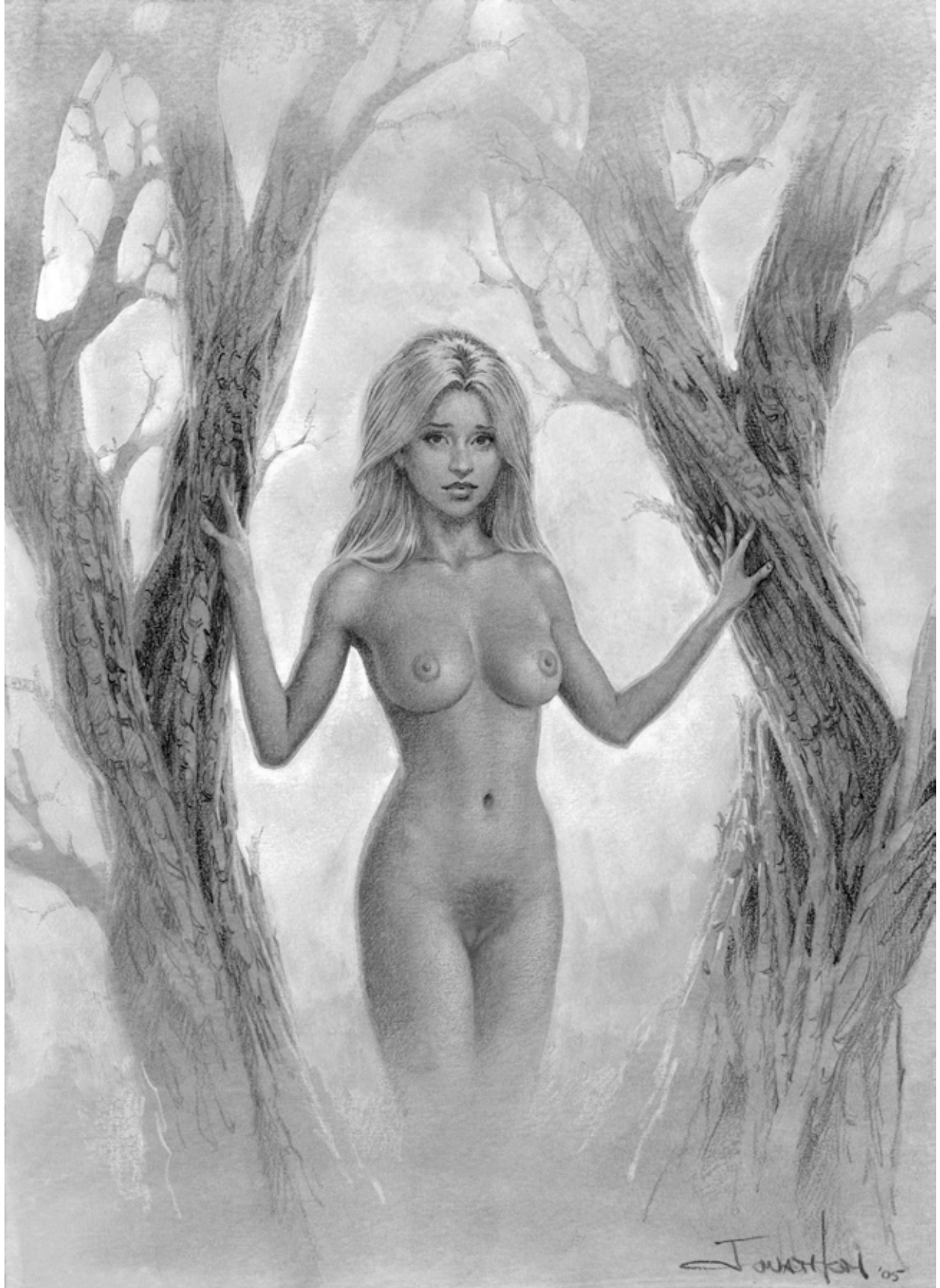


Pencil study for **Creation of Adam**



Creation of Adam
Oil on Linen - 30" x 48"





Creation of Adam - Detail, actual size





The Return
Oil on Linen - 36" x 54"



Pencil study for **Parsival's Lament**



Parsival's Lament
Oil on Linen - 30" x 48"







Pencil study for **Matrix of Eternity**



Matrix of Eternity
Oil on Linen - 48" x 24"



- About the Artist -

Canadian artist Jonathon Earl Bowser has established a presence in the international art marketplace. After graduating from the Alberta College of Art and Design in 1984, he went directly into a brief career in commercial art. Since 1989 however, he has dedicated himself to fine art and his own creative vision – in the rocky landscapes of his childhood home and in unique figurative images that explore the mythological dimensions of human experience. Jonathon's intricate paintings are not only in government and corporate collections in Canada, but also in many private collections across North America and Europe. Some even hang in the government collections of China and Taiwan. His extensive website was launched in January 1996 and now contains hundreds of images, essays, and a growing number of videos; JonathonArt.com consistently receives almost one thousand visitors a day and has provided artwork for many tens of thousands of websites.

Since childhood, Jonathon has been inspired by the endlessly fascinating beauty and mystery of the natural world. He strives, in his landscapes, to re-acquaint the public with the grandeur of familiar places or introduce them to the spectacular vistas of the more remote mountain wilderness known only to the hikers and backpackers. In his figurative work, Jonathon takes his explorations a step further, developing what he describes as **Mythic Naturalism**: “From shadowy forest cathedrals and misty mountain fortresses to the unknown depths of the celestial ocean, I am always looking for the unseen Poetry of Nature - the *intention* of the world - incarnate in my work as serenely still and inscrutably silent Goddesses.”

Jonathon has many creative passions. He has written and published a book, *The LotusMaiden – An Artist's Search for the Secret of the Sky Goddess*, that contemplates many important yet rarely dis-

cussed aspects of art and life through 296 thoroughly illustrated pages. He is also a musician and has composed and recorded lavishly orchestral soundtracks for his ongoing series of art videos; these short musical vignettes, which slowly meander through Jonathon's work in great visual detail, are a new and exciting way to pursue (and sometimes *find*) the elusive philosophy of his work.

Jonathon's art is seen around the world on magazines, puzzles, card decks, t-shirts, cross-stitch patterns, greeting cards, collectible plates, calendars, CD covers, and limited and open edition prints that have sold across six continents. His work has also appeared in and on many books - including, most famously, the cover of former Iraqi dictator Saddam Hussein's allegorical novel, *Zabibah and the King*. When asked in a New York Times interview about Saddam's unauthorized usage of his painting *The Awakening*, Jonathon said: “Strange... that the ruthless despot should admire the work of a painter of peaceful mysterious women...”





Art of The Lotus Maiden

The Mythic Naturalism of
JONATHON EARL BOWSER

...a 98-page collection of artworks (46 in color) from a curious mind with big questions about beauty, violence, creativity, free will, and the Intention of the Cosmos...



For more information about original oil paintings or fine-art reproductions, please contact the artist at: www.JonathonArt.com

ISBN 978-0-7795-0244-8

